

Interreg Greece-Bulgaria Destinations For All

European Regional Development Fund



Municipality of Thassos
Pier de Vambez 7, 64004
Thassos - Greece
Tel: +30 2593 350 100,
+30 2593 323 918
www.thassos.gr
dimos@thassos.gr



Municipality of Garmen
Str Purva n.35, 2960
Garmen - Bulgaria
Tel: +359 897 956 599
www.garmen.bg
project_garmen@abv.bg

The project is co-funded by the European Regional Development Fund (ERDF) and National Funds of the countries participating in the INTERREG V-A "Greece-Bulgaria 2014-2020" Cooperation Programme

The contents of the leaflet are sole responsibility of Municipality of Thassos and can in no way be taken to reflect the views of the European Union, the participating countries the Managing Authority and the Joint Secretariat

THASSOS iSLAND

Interreg
Greece-Bulgaria
Destinations For All
European Regional Development Fund



**GOLDEN
BEACH
CAMPING**
Accessible for
People With
Disabilities

www.destinationsforall.eu
We are taking measures
for making touristic attractions
accessible for PWD

THASSOS ISLAND

The Emerald Island of the mythical Sirens lies at the top of Aegean Sea.



Thassos has been fortunate to combine mountain and sea in a magical way.

Once you arrive, you immediately understand that Thassos is an amazing place. Forests that "touch" the emerald waters, scattered ancient monuments, seaside and mountainous villages of unique beauty, countless tasty temptations and a rare mix of modern and traditional will make your holidays unforgettable...

Swimming in crystal water, excursions around the island, sailing, diving, fishing, water sports and cruises are some of the countless choices Thassos gives to its visitors.

Any kind of beach you could wish for, lies in Thassos. Shallow waters with sandy beaches abutting onto pine trees, tiny gulfs and rocky promontories, pebble and marble beaches, satisfy every need you may have.

The hills and mountains and the network of the

hiking trails with pine, oak, plane and fir forests, offer the perfect opportunity for hiking, climbing and mount bike riding.

The Archaeological Museum, the Ancient Theater, the several sites with remains of ancient temples, agoras, fortifications and dwellings as well as the large number of Monasteries and old Churches, reveal the rich history and the religious tradition of the island.

The picturesque villages compose a unique bouquet of Greek architecture and folklore tradition with warm people and exquisite delicacies at the local tavernas.

The annual summer festival presents high quality performances with traditional, cultural and folklore events all around the island, such as the Thassian wedding in August.



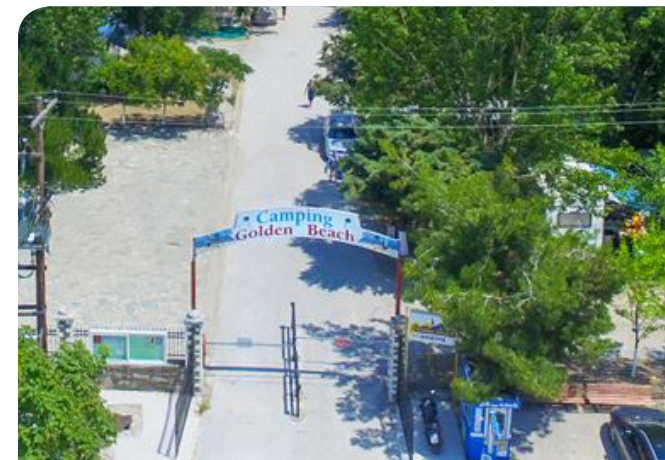
GOLDEN BEACH CAMPING

Golden beach is one of the largest and most famous beaches of Thassos Island. There, in an enchanting landscape with abundant vegetation consisting of poplars, pines and plane trees, lies the Municipal Camping of Golden Beach.

The campsite is built on a flat ground, has 195 spacious seats for caravans and tents, its main roads are paved and its high level infrastructures include reception, beach bar, doctor's office, mini market, kitchens, shared toilets and showers.

Within the framework of the project "**Initiative for improving the capacity and accessibility of tourism destinations in the cross border area**", with acronym **DESTINATIONS FOR ALL**, of the **CP INTERREG V-A "Greece - Bulgaria 2014-2020"** Municipality of Thassos is going to upgrade the Golden Beach Camping to a fully organized place for recreation and holiday for People With Disabilities.

The project is co-funded by the European Regional Development Fund (ERDF) and National Funds of the countries participating in the CP INTERREG V-A "Greece-Bulgaria 2014-2020".



Interventions to be made for PWD:

- > Construction of hiking corridors starting from the entrance and passing through the neighborhoods will end up on the beach and the beach bar.
- > Reconstruction of existing toilets and showers to make them suitable for use by PWD.
- > Access to the sea with special amphibious vehicles, access corridor, shading areas with wooden umbrellas, changing rooms, showers and chemical toilet
- > Ramps for access to all camping buildings
- > Special parking spaces
- > Creation of a mini Library with 100 books in BRAILLE
- > Supply of Braille equipment (printer, monitor, special software)