

Interreg Greece-Bulgaria



DEL 1.5

Construction/remodelling of existing buildings

Project: IN1GB-0043751

Responsible Beneficiary: KSMC LAB

LB: KSMC-LAB

In the framework of the

5th Call for Proposals INTERREG V-A COOPERATION PROGRAMME:

GREECE – BULGARIA 2014-2020

«Grant scheme for supporting SMEs to grow and expand beyond local markets»

Summary

KSMC LAB concluded the following construction activities in order to be able to implement the project:

1. Renovation of laboratory according to the national regulations for operational License
2. Operational license issued

More specifically the facility of KSMC LAB had to be remodeled so as to include the following sub-spaces and to be granted the necessary operational license:

1. Reception area

In this area, all the incoming goods are collected, checked, cleaned from the outside and classified so as to be transferred in the correct sub-space.

2. Toilets for both sexes

Separate toilets for each sex are required in this kind of facilities.

3. Changing rooms for both sexes

Separate changing rooms for each sex are required in this kind of facilities.

4. Packaging material storage room

In this room, all the incoming packaging materials (e.g., bottles, sachets, foils, pillboxes etc.) are stored on specific shelves.

5. Raw material storage room

In this room, all the incoming raw materials (both active ingredients and excipients) are stored on specific shelves.

6. Disinfection area

Everyone who enters to the Production and Laboratory area has to be disinfected in order to avoid any contamination. So, a disinfection area is required for this kind of facilities.

7. Washing room

In this room, glassware or other consumables is cleaned before or/and after usage.

8. Laboratory

A laboratory room is required so as to perform all the different analysis that will be required, as weighting, calculation of the pH, calculation of the moisture content etc.

9. Powder and liquid weighting room

In this room, powders and liquids that will be used for the production of the different forms will be weighted. A fume hood, which is a local ventilation device, is installed there so as to make sure that there will be no exposure.

10. Solid forms production room

All the different forms of solids, as tablets, coated tablets, capsules are produced in this room.

11. Liquid forms production room

Liquid production is taking place in this room. Liquids may include syrups; solutions as drops and other.

12. Rejected material area

There is a specific area where all rejected materials should be collected in order to avoid any contamination. Then, all these materials will be removed from the facility.

13. Quarantine area

In this area, qualitative and quantitative reception is carried out. The goods are stored there until the quality control process is completed. There are special markings and the area is isolated from the rest places.

14. Secondary packaging room

In this room, secondary packaging is taking place. This means that bottles or blisters will be inserted in carton boxes and then, packed in bigger cardboard boxes.

15. Final products storage room

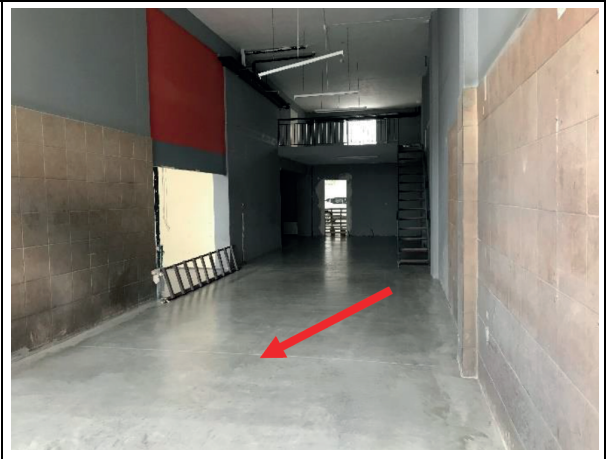
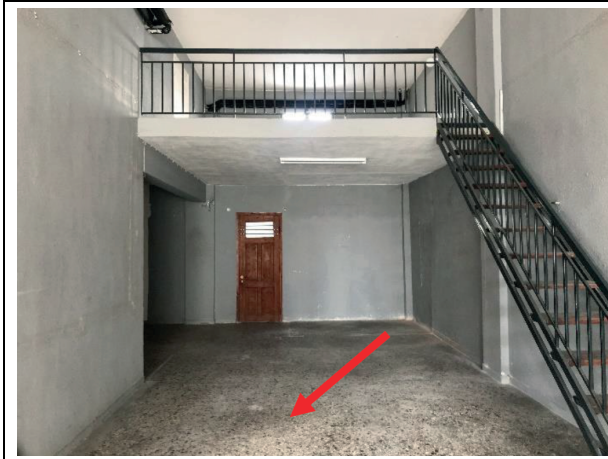
In this room, all the final products are stored on shelves for a specific time up to release of the goods in the market.

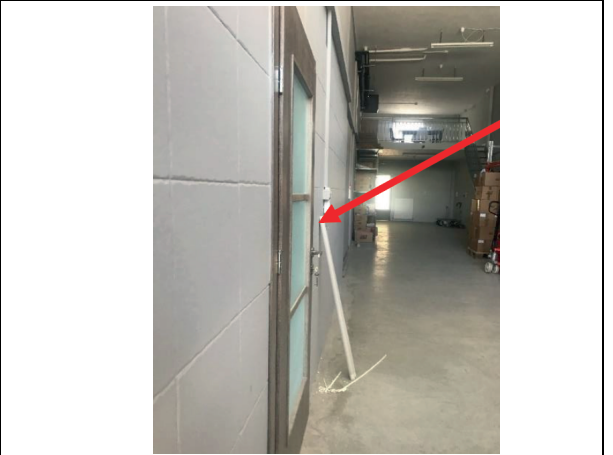
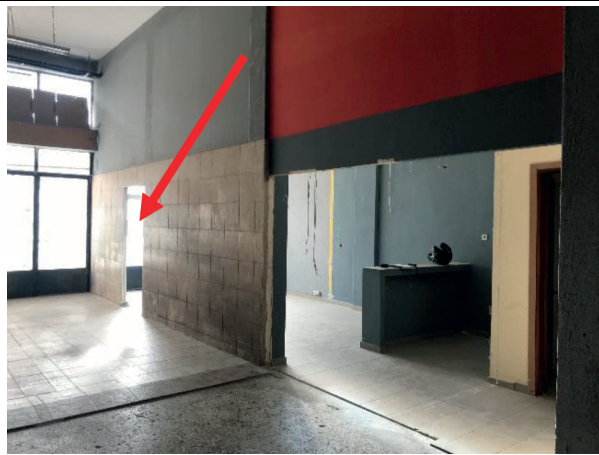
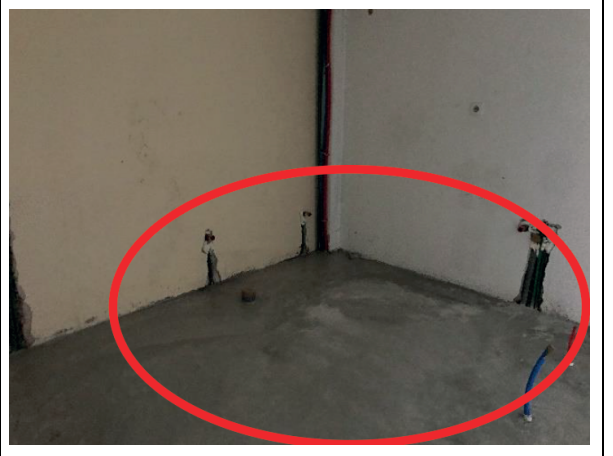
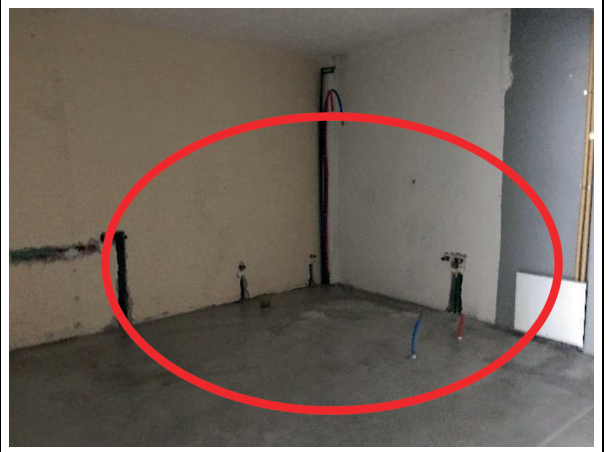
16. Ventilation

All spaces had to have special ventilation construction to cover the humidity standards set by EOF.

Photos of the KSMC LAB space before and after the renovation are provided below:

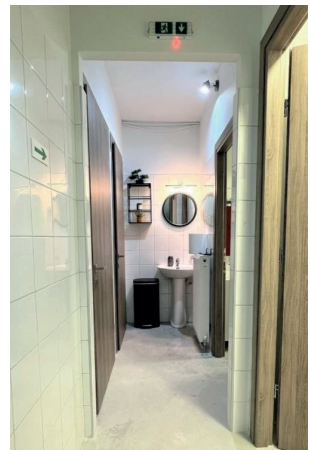








PHOTOS BEFORE	PHOTOS AFTER
	
	
	



Interior and Exterior Frames

